



North SEAL: a new dataset of sea level changes in the North Sea from satellite altimetry

Denise Dettmering¹, Felix L. Müller¹, Julius Oelmann¹, Marcello Passaro¹, Christian Schwatke¹, Marco Restano², Jérôme Benveniste³, and Florian Seitz¹

¹Deutsches Geodätisches Forschungsinstitut der Technischen Universität München (DGFI-TUM), Arcisstrasse 21, 80333 Munich, Germany

²SERCO, c/o ESRIN, Largo Galileo Galilei, Frascati, Italy

³European Space Agency (ESA-ESRIN), Largo Galileo Galilei, Frascati, Italy

Correspondence: Denise Dettmering (denise.dettmering@tum.de)

Received: 24 March 2021 – Discussion started: 29 March 2021

Revised: 30 June 2021 – Accepted: 30 June 2021 – Published: 2 August 2021

Abstract. Information on sea level and its temporal and spatial variability is of great importance for various scientific, societal, and economic issues. This article reports about a new sea level dataset for the North Sea (named North SEAL) of monthly sea level anomalies (SLAs), absolute sea level trends, and amplitudes of the mean annual sea level cycle over the period 1995–2019. Uncertainties and quality flags are provided together with the data. The dataset has been created from multi-mission cross-calibrated altimetry data preprocessed with coastal dedicated approaches and gridded with an innovative least-squares procedure including an advanced outlier detection to a 6–8 km wide triangular mesh. The comparison of SLAs and tide gauge time series shows good consistency, with average correlations of 0.85 and maximum correlations of 0.93. The improvement with respect to existing global gridded altimetry solutions amounts to 8 %–10 %, and it is most pronounced in complicated coastal environments such as river mouths or regions sheltered by islands. The differences in trends at tide gauge locations depend on the vertical land motion model used to correct relative sea level trends. The best consistency with a median difference of $0.04 \pm 1.15 \text{ mm yr}^{-1}$ is reached by applying a recent glacial isostatic adjustment (GIA) model. With the presented sea level dataset, for the first time, a regionally optimized product for the entire North Sea is made available. It will enable further investigations of ocean processes, sea level projections, and studies on coastal adaptation measures. The North SEAL data are available at <https://doi.org/10.17882/79673> (Müller et al., 2021).

1 Introduction

Sea level is one of the essential climate variables (ECVs) as defined by the Global Climate Observing System (GCOS), and sea level rise is one of the most discussed topics in the context of global change. Risk assessment of potential threats along the coasts by rising sea levels in connection with extreme events requires a solid data basis of sea level changes over the past and predictions of its future evolution. A rise of the mean sea level (MSL) is accompanied by a higher probability of severe storm surges and floods (Wahl, 2017). Comprehensive and long time series of precise sea level observations are thus decisive for the development of appropriate

adaptation measures. Furthermore, high-quality observation data on sea level provide a valuable contribution to the general understanding of interactions and processes in the climate system. The coastal regions of the North Sea are in parts densely populated and of great economic significance. Especially for low-lying areas along large coastal stretches of the German Bight, coastal protection measures, such as dike building, are of paramount importance and associated with great efforts (Sterr, 2008).

The North Sea area is well equipped with measurement systems monitoring sea level and its changes. Along the coastlines many tide gauge (TG) stations provide valuable

data, in some cases for more than 100 years. In addition, satellite altimetry can be used to monitor sea level offshore. Even if these time series are only about 25 years long, they are homogeneously distributed over the entire North Sea and provide the water stage in an absolute sense – in contrast to TG readings, which are referenced to fixed points on land and are prone to vertical land motion (VLM). However, the temporal resolution of satellite altimetry is quite sparse, and the creation of long-term and high-resolution sea level information requires the combination of different satellite missions. Moreover, especially in the vicinity of coasts where land and calm water may influence the radar echoes, the observation data need to be carefully preprocessed.

Today, a few global altimetry-based sea level datasets are available. One of them has been developed in the framework of the ESA Sea Level Climate Change Initiative (SL_cci) (Legeais et al., 2018), and another one is an operational product, computed by the Data Unification and Altimeter Combination System (DUACS) and provided by the Copernicus Marine Environment Monitoring Service (CMEMS) and the Copernicus Climate Change Service (C3S) (Taburet et al., 2019). Global products include the North Sea, but they are neither optimized for regional nor for coastal applications. Regional products from SL_cci covering the North Sea have recently shown enhanced coastal capabilities (Birol et al., 2021; Benveniste et al., 2020), but they are limited to along-track analysis of selected missions.

Most studies investigating MSL changes in the North Sea are based on country-wide TG analyses (e.g., Woodworth et al., 2009; Albrecht et al., 2011; Richter et al., 2012). In contrast, Shennan and Woodworth (1992) and later Wahl et al. (2013) use long-term sea level measurements from a set of 30 TGs covering the entire North Sea coastline. Not surprisingly, the detected sea level trends and the interannual variability are not uniform along the coastline. For the period 1900–2011 and for the whole North Sea, Wahl et al. (2013) found an absolute MSL trend of $1.53 \pm 0.16 \text{ mm yr}^{-1}$, which increases to $4.00 \pm 1.53 \text{ mm yr}^{-1}$ when only taking the period 1993–2009 into account. Later, Dangendorf et al. (2014a) extended this study to investigate the intra-annual to decadal-scale sea level variability in order to better understand the underlying processes. More recently, Frederikse and Gerkema (2018) demonstrated that the low-frequency variability in the seasonal deviations from annual mean sea level is mostly driven by wind and pressure. Information on open-ocean areas was not derived in any of these studies, since this cannot be obtained from TG measurements. This is a critical limitation, since from Benveniste et al. (2020) and Gouzenes et al. (2020) it is known that coastal sea level trends cannot always be transferred to offshore regions. Moreover, sea level changes differ significantly from region to region (Stammer et al., 2013).

Additional sources for studying the sea level and its variation are physical ocean models. These have already been used in the North Sea, the European Shelf, and the North At-

lantic for many years (Flather, 2000; Wakelin et al., 2003). In contrast to observations, most models do have improved resolution and regular coverage. However, limitations may exist due to incomplete process descriptions or doubtful assumptions, especially when no data assimilation is implemented. Observations and observation-based datasets like North SEAL play an important role in validating and improving pure model simulations (Hermans et al., 2020; Tinker et al., 2020).

Observation data from satellite altimetry to monitor open-ocean sea level variations have been available since 1992. An early study using these data in the North Sea was published by Høyer and Andersen (2003). They assessed data from the TOPEX/Poseidon mission and compared them with TG data with the aim of assimilating both data types into storm surge models. Already at that time, they found the root mean square error (RMSE) of merged altimetry and TG data to be significantly lower than for the models. More recently, Sterlini et al. (2017) analyzed satellite altimetry data to assess the causes for spatial variability of sea level trends in the North Sea. Within their study, they were able to address the spatial nature of the physical mechanisms that are responsible for sea level change due to the availability of observation data over the open ocean. The altimetry data used were extracted from the global DUACS DT2014 (Pujol et al., 2016) dataset provided by AVISO (Dewi Le Bars, personal communication, 23 April 2021). Due to the lack of coastal dedicated altimeter data preprocessing they focused on offshore regions only.

In recent years, the quality and quantity of altimetry data in the coastal zone have improved considerably (Cipollini et al., 2017): advanced radar waveform processing techniques have been developed (e.g., ALES retracker, Passaro et al., 2014), coastal dedicated geophysical corrections are available (e.g., GPD+ troposphere correction, Fernandes and Lázaro, 2016), and innovative altimeter instruments are providing data (e.g., SAR altimetry from Sentinel-3).

In this study, a new gridded altimetry-based regional sea level dataset for the North Sea is presented, named North SEAL. It is based on long-term multi-mission cross-calibrated data consistently preprocessed with coastal dedicated algorithms and gridded to a 6–8 km wide triangular mesh with innovative methods. The dataset enables advanced region-wide sea level studies and investigations of ocean processes causing sea level variations on different spatial and temporal scales.

The paper is structured as follows: Sect. 2 introduces the study area and the input and validation data used. Section 3 describes the methods applied for data preprocessing, gridding, and estimating derived parameters, i.e., trends and annual amplitudes, which are considered to be of special interest for many users. Section 4 provides detailed information on the resulting dataset, such as time period, resolution, and data format, and Sect. 5 discusses the results. Section 6 compares the dataset with other existing altimetry datasets and

with TG data. The article closes with a conclusion and information about data availability.

2 Study area and input data

2.1 The North Sea

The North Sea is a semi-enclosed marginal sea of the North Atlantic Ocean situated on the northwestern European Shelf (Quante et al., 2016). It covers an area of about 560 000 km² (970 by 580 km). It opens to the Atlantic through the Norwegian Sea in the north and has a second much smaller connection through the English Channel in the south. Moreover, it is connected to the Baltic Sea in the east. Its mean depth is around 94 m, with shallow areas less than 10 m deep in the southern part and much deeper parts (up to 700 m) in the Norwegian Trench area and parts of the Skagerrak. Sea level dynamics in the North Sea are driven by various forcings, namely tides (mainly semi-diurnal with a tidal range of up to 8 m), wind and atmospheric pressure, and heat and water exchanges, as well as river runoff and forcing from open boundaries (Zhang et al., 2020). The influence of wind on the sea level is large because the North Sea is very shallow (Dangendorf et al., 2014b). The general circulation pattern in the North Sea is mainly cyclonic. The water flows southwards along the coastal areas of the British Isles, continues eastwards and northwards along the coasts, and finally leaves the basin as the Norwegian Coastal Current (Winther and Johannessen, 2006).

This study makes use of observation data collected in an area between 4° W and 12.2° E longitude and 50 and 61° N latitude, except the regions of the Irish Sea and the Baltic Sea (Kattegat).

2.2 Satellite altimetry data

Satellite altimetry has been providing sea surface height information since the launch of the SeaSat mission in 1978. But only since 1992 have at least two simultaneously measuring satellites been in orbit, ensuring more reliable and precise height observations as well as improved data coverage and temporal resolution. This study includes almost all available missions since ERS-2 in 1995, namely TOPEX (TP), ERS-2, Jason-1 (J-1), Envisat, Jason-2 (J-2), CryoSat-2 (CS-2), SARAL, Jason-3 (J-3), and Sentinel-3A/B (S3-A/B) (ordered by launch dates). Data from the first phase of TP and from ERS-1 are not used because of doubts concerning their trend stability (Mitchum, 2000; Kleinherenbrink et al., 2019). North SEAL comprises the period between May 1995 and May 2019 (see Fig. 1) and makes use of the latest data for all missions, updated by consistent external geophysical model corrections and ITRF2014-based orbits whenever available; see Sect. 3.1 for more details.

2.3 Tide gauge data

Monthly mean water level measurements of tide gauges are used for comparison and validation. The data are derived from the datum-controlled database of the Permanent Service of the Mean Sea Level (PSMSL) (Holgate et al., 2013) and from the German Wasserstraßen- und Schifffahrtsverwaltung des Bundes (WSV, 2013). The WSV provides TG data for the German Bight with measurements at semi-diurnal tidal maxima and minima, i.e., at about 6 h resolution, which are first smoothed with a 2 d running mean filter and then down-sampled to monthly mean observations. Values are retained which pass a 3- σ outlier test.

Among all available stations in the North Sea region, those are selected that contain at least 80 % valid measurements during the study period (1995–2019), resulting in a total of 54 stations. The same monthly averaged dynamic atmospheric correction (DAC) is applied as used for the altimetry data (Carrère and Lyard, 2003). To match the DAC with the tide gauge records, among the nine closest points of the DAC grid the one that results in the highest variance reduction is selected. TG data are not corrected for ocean tides, which are assumed to be removed by monthly averaging. Remaining influences from long-period tidal effects are assumed to have a smaller impact on the estimated trends than errors of ocean tide models would have directly at the coast.

2.4 Vertical land motion

In order to make trends determined from TG data comparable to absolute (i.e., geocentric with respect to an ellipsoid; Gregory et al., 2019) sea level trends from satellite altimetry, the relative TG measurements need to be corrected for VLM.

VLM can be estimated from point measurements (e.g., from Global Positioning System – GPS – observations) or from regional or global models. Since these estimates differ significantly, data from different sources are used in this study. Beside GPS data and glacial isostatic adjustment (GIA) models, the nonlinear effect of contemporary mass redistribution (CMR) on VLM is also applied.

GPS trends are derived from the dataset of the Nevada Geodetic Laboratory (NGL) (Blewitt et al., 2016), which contains more than 17 000 vertical velocities (IGS08 reference frame). Only GPS VLM estimates from measurements with a minimum record length of 5 years between 1995 and 2019 are considered. To combine the VLM estimates with the TG trends, the nearest GPS station within a radius of 50 km around a TG is used.

GIA VLM estimates are taken from two different models. The first one, ICE-6G D (VM5a) (Peltier et al., 2018), was refined by geodetic constraints primarily by GPS observations from the Jet Propulsion Laboratory (Desai et al., 2009) over 1994–2012 and from other complementary observations, such as very long baseline interferometry (VLBI) and Doppler Orbitography and Radiopositioning Integrated

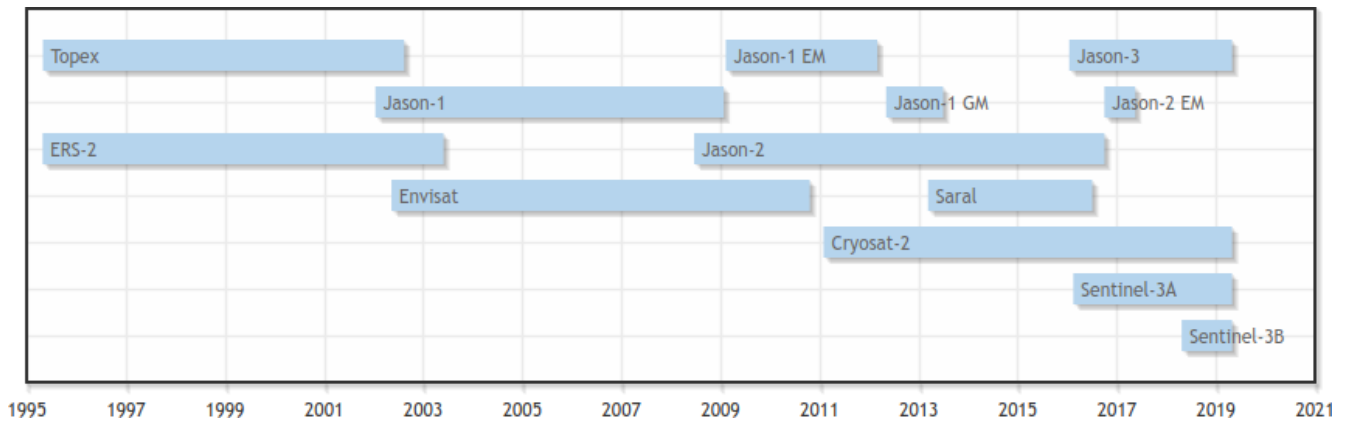


Figure 1. Satellite altimetry missions used in this study.

by Satellite (DORIS) (Peltier et al., 2015). The model fit to those observations was improved by modifications of the glaciation history. The second GIA VLM estimate is from Caron et al. (2018) (hereinafter C18). The solution is based on an ensemble of 128 000 model runs. Among those, the highest likelihood of parameters describing the ice history and 1-D Earth structure was identified from an inversion of GPS and relative sea level data using Bayesian statistics. The GIA estimate represents the expectation of the most likely GIA signal of the ensemble, and formal uncertainty estimates are directly inferred from the Bayesian statistics.

Ongoing changes in terrestrial water storage and mass changes in glaciers and ice sheets cause elastic responses of the Earth, which can result in nonlinear vertical movements. These effects from CMR are not captured by GIA models and only partially detected by GPS observations due to the relative shortness of the record lengths. Using GRACE satellite gravimetry observations, Frederikse et al. (2019) showed that associated time-varying solid Earth deformations can lead to very different trends (of the order of mm yr^{-1}), depending on the time period considered during the last 2 decades. Therefore, VLM estimates from GIA are supplemented with CMR-related land motions as used and distributed by Frederikse et al. (2020). This estimate is based on a blend of GRACE and GRACE-FO observations during 2003–2018, as well as process model estimates, observations, and reconstructions for the period 1900–2003 (see Frederikse et al., 2020, for a detailed description of the datasets and sources used).

Figure 2 gives an overview of the applied VLM corrections. There are some noticeable differences between the two GIA estimates. In particular, the dipolar feature spanning from Scotland to the German Bight in the ICE-6GD solution (Fig. 2a) is much less pronounced in C18's estimate (Fig. 2b). The linear CMR signal, which is computed over 1995–2019 (Fig. 2d), shows a non-negligible uplift signal of about 0.7 mm yr^{-1} in the entire region of the North Sea.

2.5 External satellite altimetry products

For validation purposes, North SEAL is compared with other gridded altimetry products available for the region. These products are provided by CMEMS (Taburet et al., 2019) and SL_cci (Legeais et al., 2018). Both use a regular grid and have a coarser spatial resolution of 0.25° . Given that the SL_cci dataset only lasts until 2015 (at the time of writing), all the following comparisons described in Sect. 3.4 are only performed over the period May 1995–December 2015.

3 Methods

Most of the methods applied in this study have been developed in the framework of the European Space Agency's Baltic+ Sea Level (ESA Baltic SEAL) project. Thus, detailed information can be found in the Algorithm Theoretical Baseline Document (ATBD) of that project (Passaro et al., 2020), in Passaro et al. (2021), and at <http://balticseal.eu> (last access: 27 July 2021).

3.1 Along-track data preprocessing

In order to generate monthly sea level anomaly (SLA) grids, the altimetry along-track observations go through a chain of several preprocessing steps, including a retracking for conventional altimeters by the ALES retracker (Passaro et al., 2014) and for SAR altimetry by the ALES + SAR retracker (Passaro et al., 2020), an empirical adaption of the physical ALES+ retracker (Passaro et al., 2018a) to SAR waveforms. Moreover, a relative multi-mission cross-calibration (Bosch et al., 2014) referencing all altimetry missions used to the TOPEX (and later to the Jason) data is performed. Sea level anomalies are computed using the following equations.

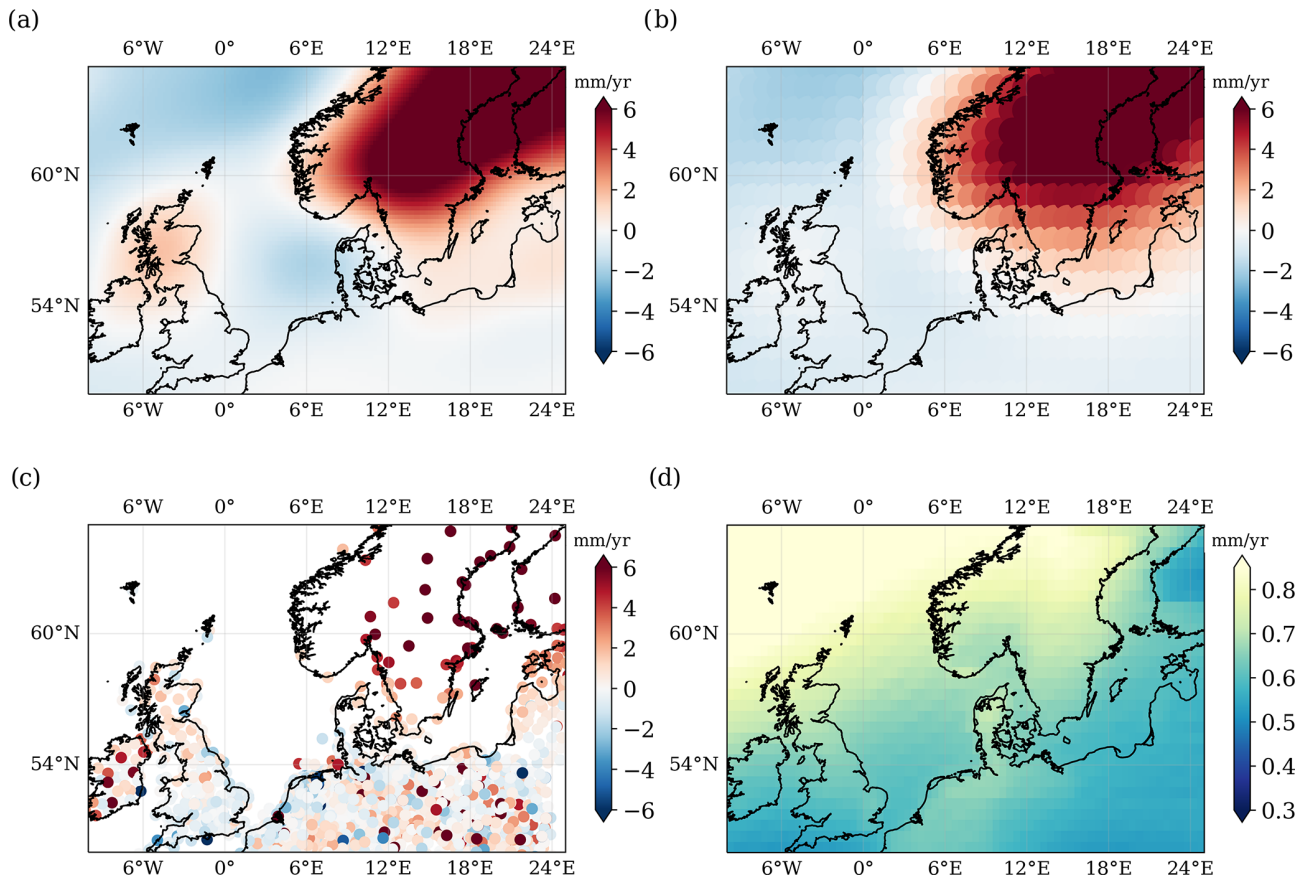


Figure 2. VLM estimates used to correct relative sea level trends from TGs. GIA trends from (a) ICE-6G D (VM5a) and (b) Caron et al. (2018). (c) GPS trend from the NGL solution. (d) Trend caused by contemporary mass redistribution over the period 1995–2019. Note that the scale of (d) is much smaller than in the other plots.

$$\text{SSH} = H_{\text{orbit}} - (R + \text{WT} + \text{DT} + \text{IONO} + \text{OT} + \text{SSB} + \text{DAC} + \text{SET} + \text{PT} + \text{RC}) \quad (1)$$

$$\text{SLA} = \text{SSH} - \text{MSSH} \quad (2)$$

Here, H_{orbit} , R , and MSSH mean the orbital height of the satellite referred to the TOPEX/Poseidon ellipsoid, the altimeter range, and the mean sea surface for reducing sea surface heights (SSHs) to SLAs. In this study, the mean sea surface DTU15MSS (Andersen et al., 2016) is used, which includes 20 years of data from the period 1992–2012. For correcting atmospheric loading and wind effects, the DAC based on operational atmospheric products is used. Even if corrections based on reanalysis data (i.e., DAC-ERA; Carrere et al., 2016) may improve the results for the early years, DAC is the only product currently available for the full period under investigation. The other terms in Eq. (1) describe several geophysical and atmospheric effects, which are considered for SSH computation. They are listed in Table 1. The sources of the orbital heights H_{orbit} are provided in the Appendix in Table A1.

In a post-processing step, the along-track sea surface heights are cleaned from possible outliers by applying the following four steps.

- Distance to coast: this is the elimination of observations closer than 3 km to the coast (TOPEX: 5 km).
- Retracking flag: this is the elimination of corrupt observations flagged based on the quality of waveform fitting (retrack indicator ≥ 0.3 for conventional altimetry and ≥ 0.1 for SAR altimetry).
- SLA threshold: this is the elimination of sea level anomalies exceeding the interval ± 1.5 m.
- Contextual along-track outlier search: this is the elimination of observations exceeding 3 times the mean absolute deviation (MAD) from the local median (determined from a moving median with a kernel size of 1 s).

More details on this flagging are provided by Passaro et al. (2020).

Table 1. Geophysical corrections applied to the along-track altimetry data.

Correction	Model	Reference	Missions
Dry troposphere (DT)	VMF3	Landskron and Böhm (2018)	all
Wet troposphere (WT)	VMF3	Landskron and Böhm (2018)	S3-A/B
	GPD+	Fernandes and Lázaro (2016)	CS-2
	GPD	Fernandes et al. (2015)	all others
Ionosphere (IONO)	NIC09	Scharroo and Smith (2010)	all
Ocean tide (OT)	FES2014 (ocean + loading)	Lyard et al. (2021)	all
Dynamic atmospheric correction (DAC)	DAC (IB + MOG2D)	CLS (2021)	all
Solid Earth tide (SET)	IERS Conventions 2010	Petit and Luzum (2010)	all
Pole tide (PT)	IERS Conventions 2010	Petit and Luzum (2010)	all
Sea state bias (SSB)	MGDR	Gaspar et al. (1994)	TP
	ALES + SAR SSB	Passaro et al. (2020)	CS-2, S3-A/B
	ALES SSB	Passaro et al. (2018b)	all others
Radial correction (RC)	MMXO18	Bosch et al. (2014)	all

3.2 Gridding

All observations passing the outlier elimination are introduced into a least-squares gridding procedure (e.g., Koch, 1999). They are interpolated onto a triangular mesh (geodesic polyhedron) in order to generate monthly grids with a spatial resolution between 6 and 8 km. The gridding procedure mainly follows the process flow introduced by Passaro et al. (2020) and Passaro et al. (2021). It is therefore only briefly described in the following text passages. Mean SLAs per grid node are computed by fitting an inclined plane (h) to the along-track observations.

$$h(x, y) = c_0 + c_1x + c_2y \quad (3)$$

A local Cartesian coordinate system (x, y) is defined around each grid node, which represents the origin. The grid node height is provided by the coefficient c_0 , and c_1 and c_2 are the slope coefficients. They are not used for the following processing. All along-track observations within a radius, the so-called cap size, of 150 km around each grid node are considered. They are spatially averaged, whereby a Gaussian weighting in consideration of their distance to the grid node is applied. The minimum weight at the cap-size edge is set to circa 10 %. Furthermore, uncertainty information is added to the least-squares approach based on the MAD of sea level anomalies per mission and month within a sub-area (0 to 6° E and 54 to 58° N). The chosen area is free of topographic features. The MAD provides a rough estimate of the SLA noise level of a certain mission in a certain month. More information is available in Passaro et al. (2020).

Within the gridding procedure, the observations are filtered again in order to reject outliers from the estimation of the coefficients. This is done by performing a three-stage outlier detection.

1. Application of a standard $3\text{-}\sigma$ criterion to sea level anomalies within the cap size.

2. Iterative outlier detection based on estimated residuals by applying a standard $3\text{-}\sigma$ criterion. The iterative outlier search stops if no outliers are detected.
3. Application of a one-sided t test by testing standardized residuals against quantiles of the Student's distribution (e.g., Koch, 1999). Observations that exceed the boundary limit at a 99th percentile level of the Student's distribution are excluded from the final coefficient estimation.

The monthly grids undergo a final check by removing sea level anomalies that exceed a threshold of ± 2 m. For each grid node, the monthly mean SLAs are provided together with an estimate of the uncertainty. In addition, a quality flag indicates if the node can be safely used or should be handled with care. This flag is allocated according to the standard deviation per node. If the standard deviation exceeds a specified threshold and the node has less than 280 months of valid data, it is labeled as “bad” quality (flag: 1). The threshold is set to the 90th percentile of all SLA standard deviations averaged over time.

3.3 Estimation of trend and amplitudes of the mean annual sea level cycle

The monthly SLA grids provide the basis for estimating a sea level trend per grid node as well as the amplitude and phase of the annual cycle. While a linear trend is fitted to the data, the annual cycle amplitudes are obtained from half of the differences of the months with the maximum and minimum multi-year monthly means. The uncertainties are based on the combined uncertainties of these months.

Trend uncertainties are derived while accounting for autocorrelated errors in the data using maximum likelihood estimation (MLE). To identify the most appropriate noise model required to accurately estimate the trend uncertainties, we investigate the fit of a variety of different stochas-

tic noise model combinations as done in, e.g., Royston et al. (2018). These are an autoregressive AR(1) noise model, a power law plus white noise, a generalized Gauss–Markov (GGM) plus white noise, a Flicker noise plus white noise, and an autoregressive fractionally integrated moving-average (ARFIMA(1,d,0)) model. For the considered domain, we find that on average (of all altimetry observations in the North Sea) the AR(1) has the lowest mean (or median) values of the Akaike information criterion (AIC; Akaike, 1998) and the Bayesian information criterion (BIC; Schwarz, 1978). Thus, this model is selected to assess formal parameter uncertainties. Uncertainties of the linear trend and the annual amplitude are given at the 95 % confidence interval.

For a more detailed description of the parameter estimation please refer to Passaro et al. (2021, 2020).

3.4 Comparison of the data with tide gauges

To evaluate the performance of North SEAL, we compare absolute sea level trends and annual amplitudes derived from satellite altimetry and TGs. Moreover, correlations and rms between the two time series at TG locations are analyzed. It should be highlighted that taking the closest altimetry point to a TG is not always necessarily the highest correlated or most representative observation. Thus, to match the altimetry sea level data with the TG measurements, we follow the approach of Oelsmann et al. (2021), which only uses the most highly correlated data in the comparison instead of taking the altimetry observation closest to the TG. Oelsmann et al. (2021) showed that this approach ensures increased consistency of along-track altimetry and TG observations and enhances the agreement of trends. Here, 20 % of the best-correlated gridded altimetry data within a radius of 200 km around a TG are selected. This region is hereinafter called the zone of influence (ZOI). Time series of sea level are computed from spatial averages of the altimetry data within the ZOI. Absolute sea level trend deviations between altimetry and TGs are subsequently derived by subtracting the TG measurements from the averaged altimetry data, whereby the correction for VLM is applied.

The uncertainties of absolute TG sea level trends u are based on the combined uncertainties of the TG and the VLM trends ($u = \sqrt{u_{\text{TG}}^2 + u_{\text{VLM}}^2}$). In order to compute uncertainties of trend differences (for significance tests), the altimetry uncertainties are also taken into account. Differences (and their uncertainties) in the annual amplitudes are computed by subtracting the amplitudes from the individual altimetry and TG time series and by computing the combined uncertainty of the annual amplitudes.

We note that the approach of using the ZOI significantly improves the comparability of sea level trends. Accordingly, the trend differences presented in Sect. 6 are on average about 20 % smaller when using the ZOI approach instead of taking the closest altimetry grid point.

In contrast to trends and the annual cycle, correlations and rms are computed at the closest valid (i.e., with at least 280 unflagged months of data available) altimetry node within a radius of 150 km. Correlations are derived from the detrended altimetry and TG time series. We apply the quality flag to the SLA dataset before computing correlations. This reduces the number of TG–altimetry pairs to 52. We also use the same number of TGs (52) for the comparison with other altimetry products.

Next to correlations, we also analyze the rms difference of TG and altimetry time series in order to study the spread between the data. To account for datum differences between TGs and altimetry, offsets are removed from the difference time series. Three different solutions are computed: monthly detrended, monthly detrended and deseasoned, and annual detrended. In order not to distort the annual values by incomplete years, only the period from January 1996 to December 2016 is used for all comparisons. To deseason the data, we subtract the multi-year monthly averages. Annual averages are studied to compare the variability on interannual timescales and to also assess the correctness of the representation of lower-frequency processes.

4 The North SEAL dataset

All data are stored in NetCDF format and span a time period from May 1995 to May 2019. It is provided on an unstructured triangular mesh characterized by nearly equally spaced grid node distances ranging from 6 to 8 km (geodesic polyhedron) for the entire region of the North Sea between 4° W and 12.2° E and between 50 and 61° N with the exception of the Irish Sea and the Kattegat.

The SLA grids are provided in monthly resolution. Data gaps due to missing observations or gridded SLAs exceeding ± 2 m are set to undefined. File names (i.e., YYYY_MM.nc) indicate year (YYYY) and month (MM). All provided coordinates and height values are referenced to the TOPEX ellipsoid. SLA data are referenced to the DTU15MSS (Andersen et al., 2016). The file named North-Sea_trend_and_annual_cycle.nc contains the sea level trends and amplitudes of the annual cycle per grid node. Table 2 lists all NetCDF variables included in the dataset.

5 Results

5.1 Sea level anomalies

Figure 3 shows the mean SLA averaged over the observation period of 24 years. In addition, three selected time series at different locations in the North Sea are displayed. As described in Sect. 3.1, the SLAs are referenced to the DTU15 mean sea surface. Since the input data and time period of DTU15MSS (1992–2012) and North SEAL (1995–2019) are different, the SLAs do not average to zero everywhere. A geographical pattern of negative offsets around 2 cm is visible

Table 2. NetCDF variables included in the dataset.

NetCDF variable	Description	Unit
Monthly SLA grids	YYYY_MM.nc	
lon	Geographic longitude of grid node	°
lat	Geographic latitude of grid node	°
time	Day since 1 January 1985 00:00:00 (continuous)	d
sla	Sea level anomaly (SLA)	m
sla_std_lsq	Uncertainty of SLA per grid node resulting from the gridding procedure	m
num_used_obs	Number of observations used within the gridding procedure per grid node	–
num_obs	Number of theoretically available observations for gridding procedure per grid node	–
qf_monthly_grid	Quality flag resulting from the gridding procedure (bad: 1, good: 0)	–
mss	Mean sea surface height from DTU15MSS (Andersen et al., 2016)	m
Trend grid	NorthSea_trend_and_annual_cycle.nc	
lon	Geographic longitude of grid node	°
lat	Geographic latitude of grid node	°
sla_trend	Sea level trend over May 1995 until May 2019	m yr ⁻¹
sla_trend_unc	Uncertainty of sea level trend (95 % confidence level)	m yr ⁻¹
sla_annual_ampl	Annual amplitude over May 1995 to May 2019	m
sla_annual_ampl_unc	Uncertainty of annual amplitude	m
sla_annual_ampl_max	Month with maximum amplitude of the annual cycle	–
sla_annual_ampl_min	Month with minimum amplitude of the annual cycle	–
qf_monthly_grid	Quality flag resulting from gridding procedure (bad: 1, good: 0)	–

in large parts of the coastal areas of the North Sea, especially along southern Norway and the coasts in the south. This effect is probably due to the use of a global MSS product that uses a different set of retracked data and geophysical corrections. It has no influence on the time series analysis of SLA, in particular not on derived trends and annual amplitudes derived in this study. In fact, most of the affected regions are edited when taking the quality flag (see Sect. 3.2) into account.

The three SLA time series on the right-hand side of Fig. 3 show the temporal evolution of sea level for different grid nodes. A distinct annual oscillation and interannual changes are clearly visible for the three locations. Moreover, all three curves show a rise of sea level.

The monthly SLA time series displayed in Fig. 3b–d suggest that the sea level variability differs strongly over the domain. In agreement with, e.g., Dangendorf et al. (2014a) and Wahl et al. (2013), the variance of the time series towards the German Bight (Fig. 3c) strongly exceeds the variance observed at the Norwegian and British coastlines (Fig. 3b and d). Using long TG records, Dangendorf et al. (2014a) demonstrated that the sea level variability at the southern and eastern coastlines of the North Sea is particularly dominated by westerly winds, which explains up to 80 % of the observed variability in these regions. The regional differences in variability also influence the estimated sea level trends and their associated uncertainties, as with a length of 24 years the time span is still relatively short.

5.2 Sea level trends

Besides the mean sea surface, the temporal evolution of sea level is of great interest. In view of global change, the long-term change in particular is highly relevant for predicting future sea levels and their impact for society and environment. Thus, as part of North SEAL, sea level trends are also provided. While the mean sea level trend between May 1995 and May 2019 in the North Sea amounts to $2.61 \pm 0.95 \text{ mm yr}^{-1}$, the trend varies between 1.5 and 3.5 mm yr^{-1} over the region as illustrated in Fig. 4. The highest trends are observed in the German Bight and around Denmark, whereas significantly lower trends are observed around the southern part of Great Britain. Figure 4a and b include a black contour line. This line confines the coastal areas flagged as decreased quality in the SLA dataset in the framework of the gridding procedure (see Sect. 3.2). This flag is defined quite conservatively and tuned to provide optimal SLA time series. For trend computations, a rejection of the flagged areas is not necessary when the trend uncertainties are taken into account in the course of the data analysis. When the flagged coastal regions are excluded, the overall trend for the North Sea changes only marginally to $2.60 \pm 0.95 \text{ mm yr}^{-1}$.

Even with almost 2.5 decades of observation data, the trend uncertainties are still of the same order of magnitude as the trend itself. As visible from Fig. 4b, the trend uncertainties vary between 0.5 and 2.5 mm yr^{-1} , with the smallest values in the northern part of the North Sea, especially close to the Norwegian coast. The highest uncertainties can

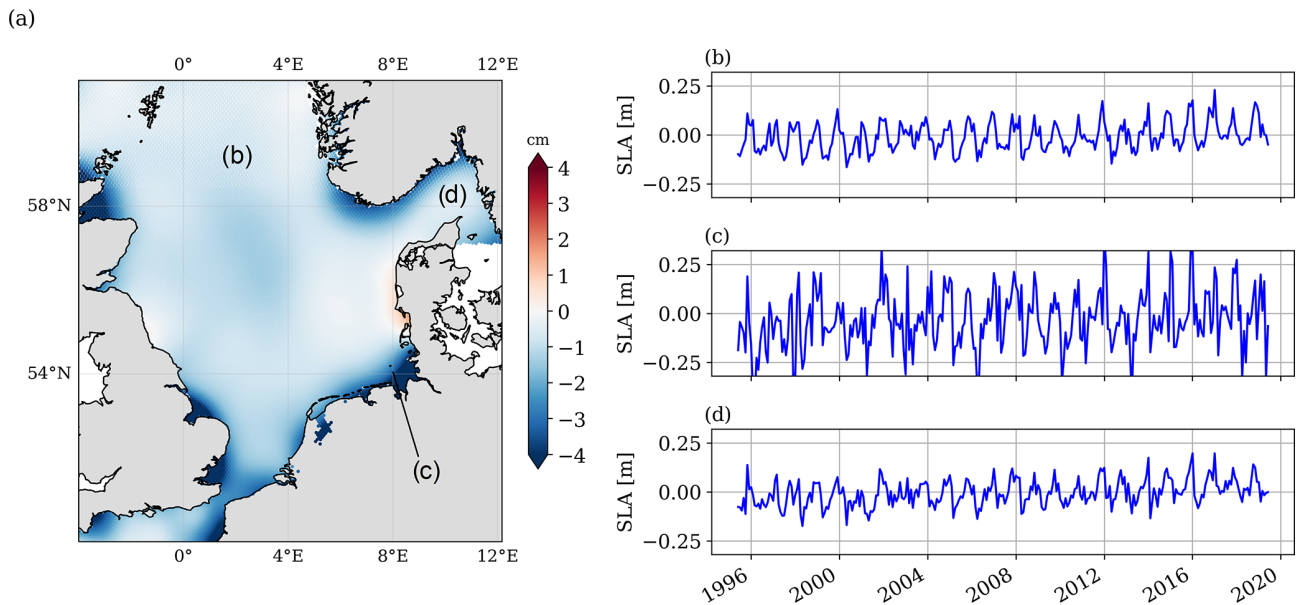


Figure 3. Mean sea level anomalies over the period May 1995 to May 2019 in the North Sea (a) and three examples of time series of sea surface anomalies at different locations (b–d).

be seen in the German Bight and at some smaller bays along the coasts of Great Britain and France. The particularly large uncertainties in the German Bight coincide with the aforementioned larger sea level variability described by Dangen-dorf et al. (2014a) and may also be affected by poorer ocean tide corrections in these areas.

The average trend of $2.61 \pm 0.95 \text{ mm yr}^{-1}$ differs from the MSL trend of $4.00 \pm 1.53 \text{ mm yr}^{-1}$ observed by Wahl et al. (2013) over 1993–2009. The difference is, however, still within the limits of the confidence bounds. Deviations between the trends may, on the one hand, be due to the different periods of observation. On the other hand, the trend of Wahl et al. (2013) is based on TG observations and thus may not unequivocally be compared to the sea level trend from gridded altimetry data that are spatially distributed over the North Sea. In addition, the region was not exactly identical, as it extended further into the English Channel where they found much smaller trends ($1.32 \pm 1.11 \text{ mm yr}^{-1}$) than in the inner North Sea ($4.59 \pm 1.82 \text{ mm yr}^{-1}$). Compared to the sea level trend of the North Sea over the last century of $1.53 \pm 0.16 \text{ mm}$ (Wahl et al., 2013), our study reveals a significantly increased sea level trend over the past 2.5 decades. Again, however, the value from Wahl et al. (2013) is based on TGs and not entirely comparable. In general, our observed average trend is of the order of the global sea level trend of $3.1 \pm 0.1 \text{ mm yr}^{-1}$ (from 1995 to 2018) reported by Cazenave et al. (2018).

5.3 Annual amplitudes

In addition to long-term changes in sea level, North SEAL allows for the analysis of seasonal variations. Figure 5 shows

the estimated amplitudes of the annual cycle as derived from multi-year monthly means (see Sect. 3.3). The highest amplitudes of more than 10 cm are visible in the German Bight and close to the Danish coasts. The signal is much smaller in the north of the region around Norway. Estimates of the annual amplitudes are much more accurate than the estimates of the trends. Uncertainties vary between 1 and 4 cm and amount to approximately one-third of the signal itself.

6 Comparison with tide gauge measurements and external altimetry datasets

Detrended SLA time series of North SEAL are compared with measurements from TG stations and the alternative altimetry products from CMEMS and SL_cci (see Sect. 2.5) using the methods described in Sect. 3.4. In order to be as consistent as possible, the analysis is performed for the overlapping time period of all three altimetry datasets (1995–2015).

6.1 Time series comparison

In order to assess how good North SEAL represents sea level variability on different timescales in comparison with TGs, correlations of the time series and their rms differences are analyzed. The median and mean correlation between North SEAL SLA and 52 TGs amounts to 0.86 and 0.85, respectively (Fig. 6a). The highest correlations (up to 0.93) are found for the TGs at the Shetland Islands and along the northern coast of Denmark. The lowest correlations appear in small bays and fjords, e.g., the Firth of Forth (0.69) and the

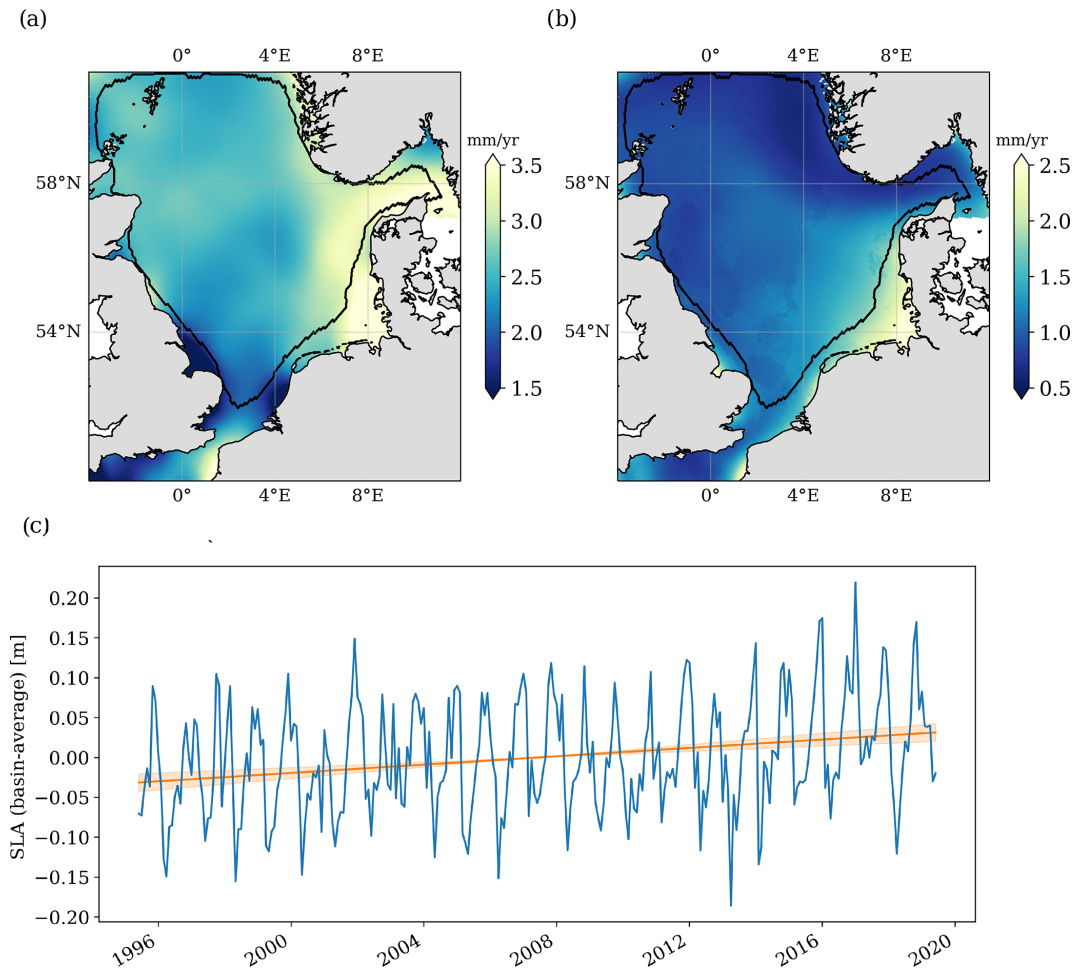


Figure 4. Sea level trends from altimetry (a) and their associated uncertainties (b) for the period between May 1995 and May 2019. The black contour line confines the coastal regions flagged in the dataset. The curve in (c) shows the SLA time series averaged over the entire North Sea. The linear trend is $2.61 \pm 0.95 \text{ mm yr}^{-1}$.

Oslofjord (0.72). Low correlations are also observed along the coast of Belgium and the Netherlands at the mouth of the English Channel (Strait of Dover).

This distribution is also visible in the correlations between the CMEMS/SL_cci products and TGs (Fig. 6b and c). Very likely, some of those TGs in river mouths or smaller bays do not provide data that are representative for the sea level variations of the coastal or open ocean in their vicinity. Dividing all TG stations into different categories according to their locations (Fig. 7) demonstrates that the majority of optimally located stations show correlations of around 0.8 or better, whereas stations located at fjords, rivers, or close to floodgates show generally lower correlations. For stations located in river mouths the spread of correlation values is largest. On the other hand, stations sheltered by islands show high correlations with a small spread. For TGs at rivers and near floodgates North SEAL clearly outperforms the other two products. Obviously, here, the quality flag successfully prevents the use of inappropriate data. However, in fjords,

especially in the Oslofjord, North SEAL shows lower performance. This may be caused by a distance between the respective grid node and the TG that is too large.

Overall, with median and mean correlations of 0.86 and 0.85, respectively, North SEAL matches the TG measurements better than SL_cci (0.82/0.78) and CMEMS (0.79/0.78). Only for a minority of TGs are the correlations lower than for SL_cci (23.1 %) and CMEMS (11.5 %). The average difference in correlation is about 0.06 for both datasets (0.0651 for SL_cci; 0.0622 for CMEMS). This indicates an average improvement in correlation between 8.4 % (CMEMS) and 10.5 % (SL_cci).

The better performance close to the coast can be attributed in large part to the consideration of quality flags in the North SEAL SLA grids. They enable the selection of the closest grid node with reliable SLA information and improve the correlations with TG measurements by about 12 % on average. Moreover, the flag led to the exclusion of two TG stations for which no valid grid node could be found within a

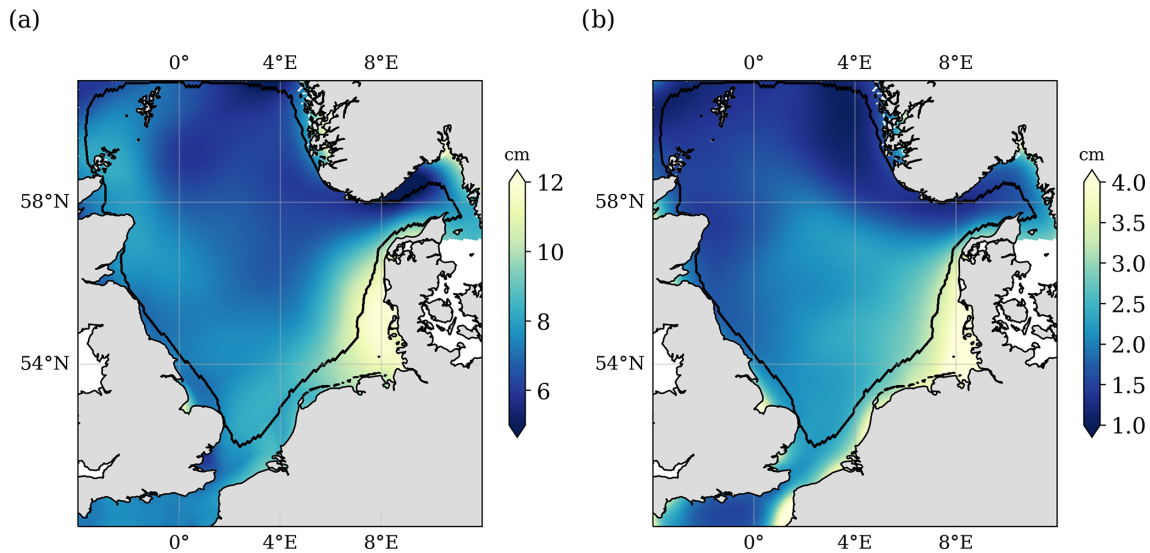


Figure 5. Amplitudes of the annual cycle of the sea level (a) and associated uncertainties (b) for the period 1995–2019. The black contour line confines the coastal regions flagged in the dataset.

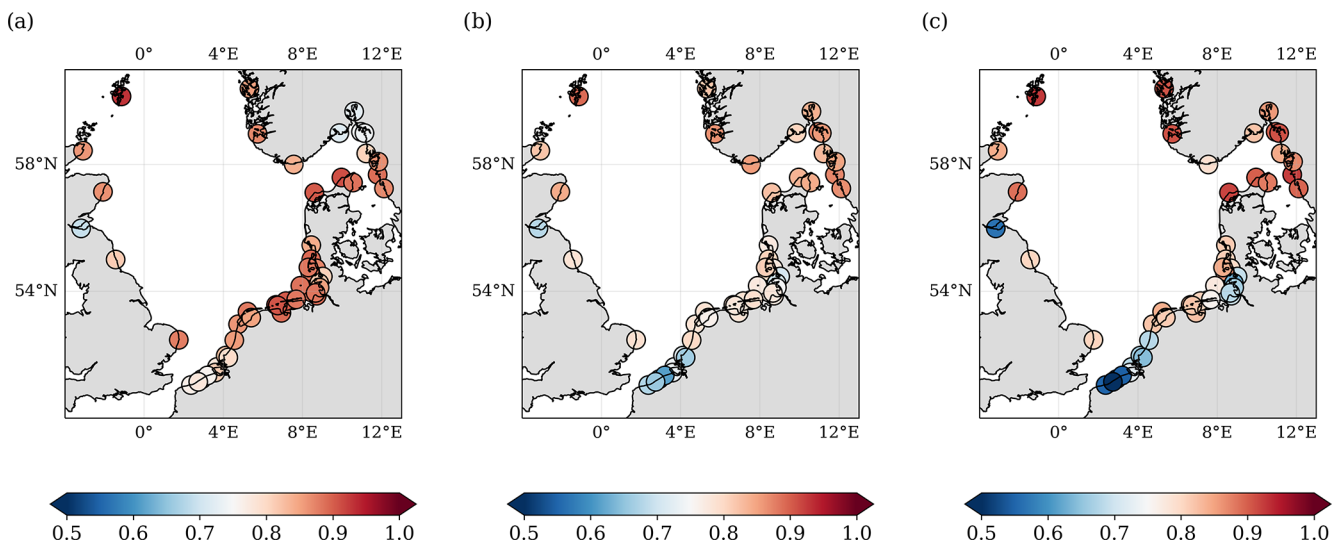


Figure 6. Correlations between altimetry sea level anomalies and measurements of 52 TGs computed over a period of 20 years (1995–2015) for three different altimetry datasets: (a) North SEAL, (b) CMEMS, and (c) SL_cci. The median correlations for all stations are 0.865 (North SEAL), 0.789 (CMEMS), and 0.816 (SL_cci). Quality flags of North SEAL grids have been considered.

distance of 150 km (Oslo in Norway and Newhaven at the south coast of Great Britain). Figure A1a in the Appendix shows the correlations between altimetry and TGs if the quality flags are not considered, i.e., if the SLA series at the grid node closest to the TG is applied.

In order to evaluate and quantify the consistency in sea level variability, next to the correlations, the rms differences between altimetry and TG time series are computed and analyzed. This is done for all three altimetry datasets for monthly and for annual time series, both reduced by potential offsets and trends. In addition, a monthly deseasoned time se-

ries is included in the investigation. Table 3 shows the results from these comparisons. The median rms values are all between 3 and 8 cm. North SEAL shows values of 4.9 cm on a monthly scale (without annual signal) and 2.2 cm on an annual scale. With this, it clearly outperforms the other two products on a monthly scale. However, for the representation of lower-frequency processes, especially interannual variability, the CMEMS product slightly outperforms the other datasets.

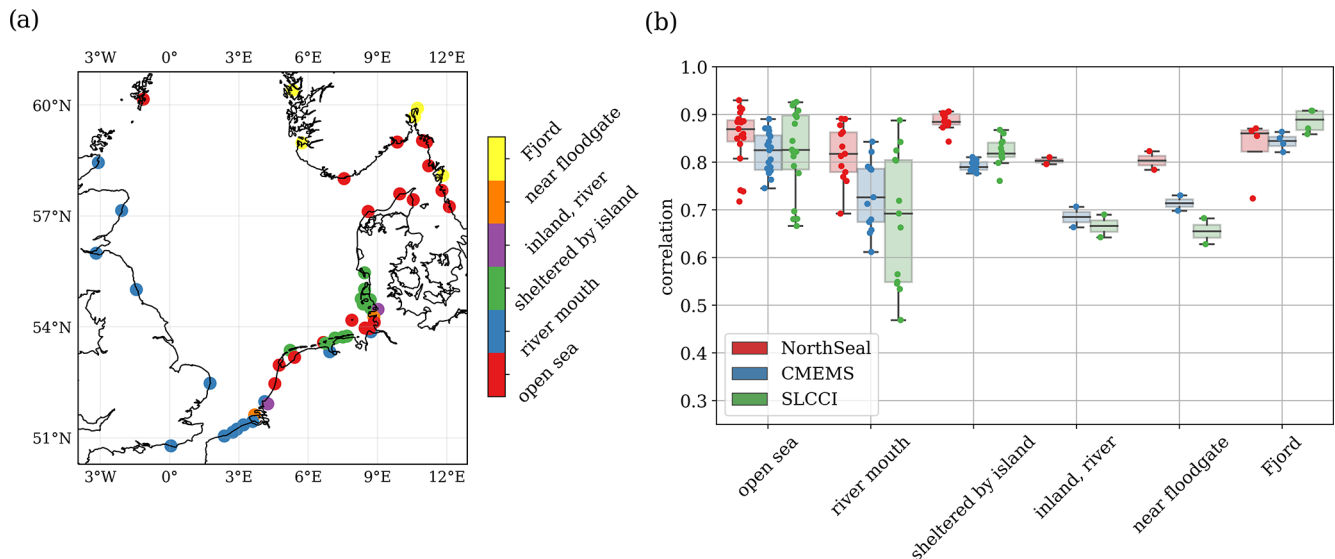


Figure 7. Correlations between sea level variations from three different altimetry products and TG measurements depending on TG location category.

Table 3. Comparison of sea level variability from altimetry (for North SEAL, CMEMS, SL_cci) and 52 TGs over 1996–2015. Differences between altimetry and TGs are provided in terms of median rms in centimeters. The best altimetry solution in each case is marked in bold. All time series are corrected for datum differences, and trends are reduced.

	North SEAL	CMEMS	SL_cci
rms of monthly time series	5.07	6.24	7.51
rms of monthly deseasoned time series	4.86	5.77	7.26
rms of annual time series	2.20	1.94	2.31

6.2 Differences in trends and annual amplitudes

As described in Sect. 3.4, TG trends are corrected for VLM in order to make them comparable with the absolute sea level trends from satellite altimetry. Figure 8 shows the absolute sea level trends from three altimetry datasets and from TG measurements (top row), their standard deviations (middle row), and the trend differences at the TG locations (bottom row). Since GPS information is not available for all TG locations (see Sect. 2.4), the figure only contains 27 TGs.

The trends from the three altimetry datasets show clear regional differences. While all products show higher trends around Denmark, discrepancies are visible in the central North Sea. For large areas south of 56°N, the trends from SL_cci and (to a smaller extent) CMEMS are about 1 mm yr⁻¹ higher than the North SEAL trends. Likewise, both products show higher trends close to the coasts of Denmark and Norway. These differences are up to about 1.5 mm yr⁻¹. However, none of these differences are significant in view of the trend uncertainties.

The trend uncertainties show similar geographic patterns in all datasets. The lowest accuracies are found in the area of the German Bight. They improve towards the central North

Sea and are highest in the region of the Shetland Islands and west of Norway. The main differences between the three datasets can be seen in small bays (e.g., along the British coast), where North SEAL is characterized by higher uncertainties than the other two products. Based on the existing data, it cannot be decided whether this behavior is caused by less correct trends or by more realistic uncertainties.

The comparison of altimetry and TG trends (the latter corrected for VLM) reveals large discrepancies, while the uncertainties for both data types agree quite well. Trend differences reach up to 3.8 mm yr⁻¹ with a median of -0.13 mm yr⁻¹ and an rms of 1.40 mm yr⁻¹. Table 4 indicates that the rms values for North SEAL are slightly smaller than for the other two altimetry datasets (CMEMS: 1.42 mm yr⁻¹, SL_cci: 1.49 mm yr⁻¹). However, since the time period of about 20 years is still quite short for a reliable trend estimation and since uncertainties of three different data types are involved (altimetry, TGs, and VLM), the trend differences for almost all locations are not statistically significant.

Moreover, the values are dependent on the applied VLM correction of the relative TG trends. Table 4 provides the rms of trend differences and the median bias between the

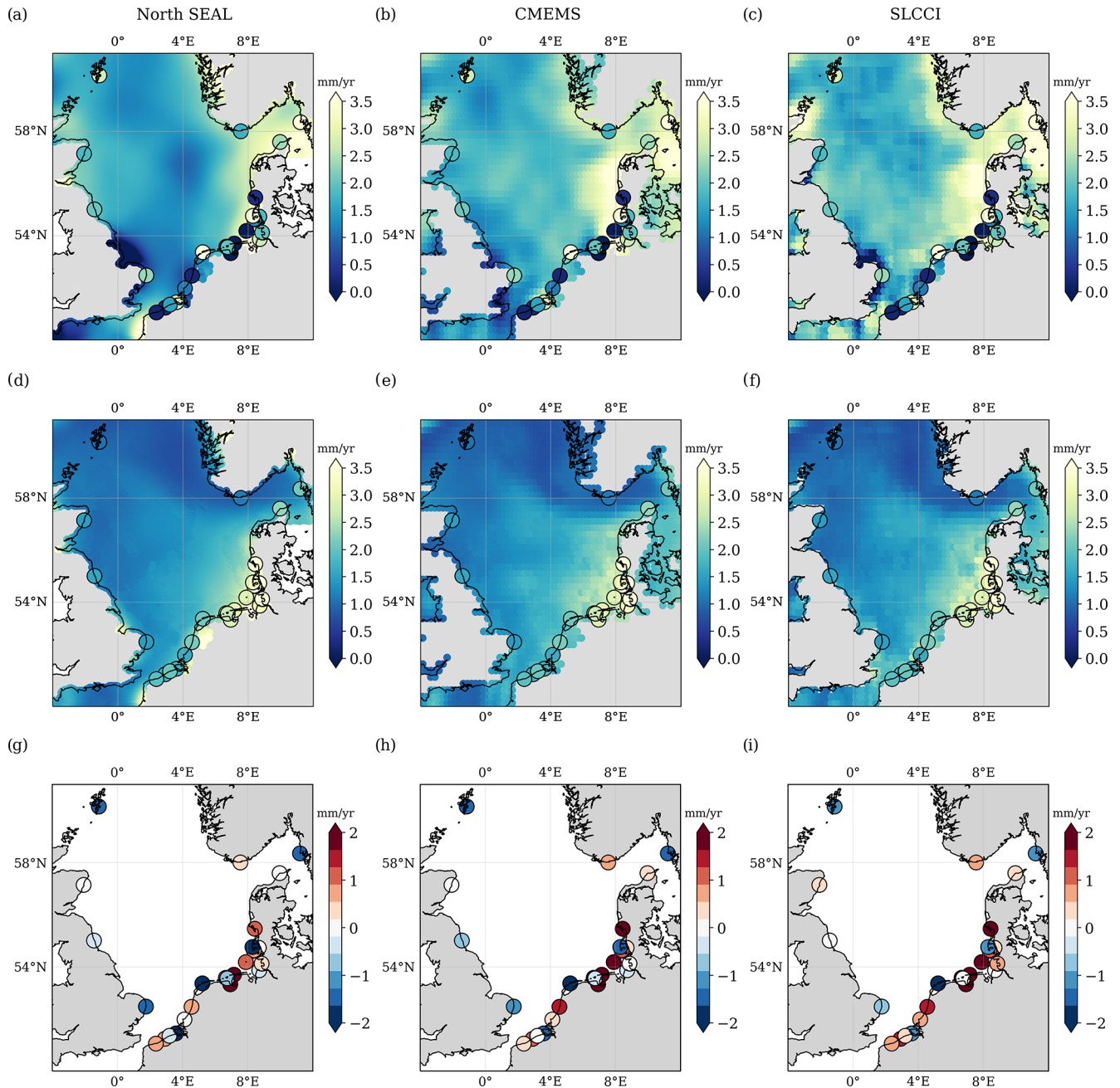


Figure 8. Absolute sea level trends over the period 1995–2015 (a–c) and associated uncertainties (d–f) for the three altimetry datasets (North SEAL, CMEMS, SL_cci) and TG measurements corrected for VLM. Differences in absolute sea level trends in TG locations (g–i). None of these differences are statistically significant.

trends from altimetry and TGs. For consistency, these results only refer to the 27 TGs that are co-located with a GPS station. Interestingly, implementing the GIA VLM correction C18 (Caron et al., 2018) results in a lower deviation of the trends than using local GPS information. For North SEAL, for example, the improvement is about 18 % in terms of rms. This VLM correction also outperforms the second GIA-based estimate from ICE-6G. The better performance of

GIA-based VLM corrections compared to GPS corrections could be caused by the relatively large maximum allowed distance of 50 km between a TG and GPS station. Locally unequal VLM might introduce different signals at a GPS and TG location even over such distances. For example, two GPS stations located on the island of Sylt (RANT and HOE2, in the vicinity of TG Hörnum) indicate VLM estimates differing by more than 1 mm yr^{-1} , even though they are within

Table 4. Comparison of absolute sea level trends and annual amplitudes from altimetry (for North SEAL, CMEMS, SL_cci) and 27 TGs (for which GPS data are available) over 1995–2015. Trend differences between altimetry and TGs are provided in terms of root mean square (rms) difference and median bias in millimeters per year (mm yr^{-1} ; trend) and centimeters (annual amplitude). For each altimetry solution, the best trend solution is marked in bold.

	North SEAL		CMEMS		SL_cci	
	rms	Bias	rms	Bias	rms	Bias
Trends						
NGL(GPS)	1.4010	−0.134	1.4248	0.145	1.4905	0.424
C18	1.1461	0.038	1.1577	0.234	1.3061	0.509
ICE-6G	1.3131	0.181	1.4312	0.096	1.5711	0.484
C18 + CMR	1.2755	−0.596	1.1514	−0.400	1.1580	−0.072
ICE-6G + CMR	1.3219	−0.421	1.3204	−0.475	1.3466	−0.099
Annual amplitudes	1.5981	−0.2499	2.3477	−1.4110	1.9140	−0.7305

a distance of only about 10 km. This could make a smooth long-term GIA model make a better-suited correction. As can be seen in Fig. 8g–i, the largest scatter of absolute sea level trends is observed in the German Bight, more precisely at the offshore-located islands. Such areas could be more strongly affected by local VLM than, for instance, the TG locations along the British coastlines.

Adding the effect of CMR to GIA estimates influences the agreement of the trends in different ways. We observe the strongest improvement for SL_cci (for both rms and bias) and moderate improvement for the rms of CMEMS but with an increase in the bias. Likewise, the bias becomes larger for North SEAL when the effect of CMR is added, and in this case, the rms also increases (for either GIA-solution). The applied CMR correction generates a large-scale uplift signal of about 0.7 mm yr^{-1} over the domain (Fig. 2), which leads to an increased absolute sea level trend at the TG. This effect projects into the negative biases for North SEAL and CMEMS. The highest consistency between altimetry and TGs is obtained for North SEAL when the TG measurements are corrected using C18 VLM. Nevertheless, further investigations are worthwhile to understand why the CMR correction introduces pronounced biases for North SEAL and CMEMS, while it improves the consistency for SL_cci. For such studies, however, longer time series would be desirable in order to reduce the trend uncertainties.

A comparison of the annual cycles among the altimetry products and TG data reveals much better consistency than in the case of sea level trends. Figure 9 shows the amplitudes (top row), their uncertainties (middle row), and the discrepancies between altimetry and TGs (bottom row). Overall, we find qualitatively similar patterns of the amplitudes and of their uncertainties.

The difference between altimetry and TG amplitude is significant for only very few stations (three stations for North SEAL and SL_cci, seven stations for CMEMS). The largest deviation is found for CMEMS at Dagebüll in the German

Bight (−6.0 cm). This value is just slightly larger than the combined uncertainty of 5.8 cm (95 % confidence level). The German Bight is generally characterized by the largest annual amplitudes and largest uncertainties. Note that a negative deviation means an underestimation of the amplitude in the altimetry dataset. For the whole domain, North SEAL shows the lowest absolute mean deviations of the annual cycle of 1.3 cm (CMEMS: 1.8 cm; SL_cci: 1.5 cm) and the lowest rms difference of 1.6 cm compared to 2.3 and 1.9 cm (see Table 3). This consolidates its coastal performance compared to the other altimetry products.

7 Code and data availability

The North SEAL dataset (i.e., monthly sea level anomalies, sea level trends, and annual amplitudes) can be downloaded from SEANOE at <https://doi.org/10.17882/79673> (Müller et al., 2021). The altimetry observations used and all necessary atmospheric and geophysical corrections are obtained from the Open Altimeter Database (OpenADB) operated by DGFI-TUM (<https://openadb.dgfi.tum.de/en/>, last access: 5 March 2021). Original altimeter datasets are maintained by AVISO, ESA, NOAA, and PODAAC. GPS vertical velocity estimates are provided by the NGL at the University of Nevada (<http://geodesy.unr.edu>, last access: 1 September 2020 – Blewitt et al., 2016). PSMSL tide gauge data are available at <https://www.psmsl.org/data/obtaining/> (last access: 10 December 2020 – Holgate et al., 2013). Additional German tide gauges were obtained from the Wasserstraßen- und Schifffahrtsverwaltung des Bundes (WSV) and are available on request through the Bundesanstalt für Gewässerkunde (BfG) (<https://www.bafg.de>, last access: 9 October 2020 – WSV, 2013). The CMEMS dataset (averaged DTMSLA AVISO gridded altimetry data) is provided from AVISO (<https://www.aviso.altimetry.fr>, last access: 10 December 2020). The SL_cci (Sea Level ECV v2.0) prod-

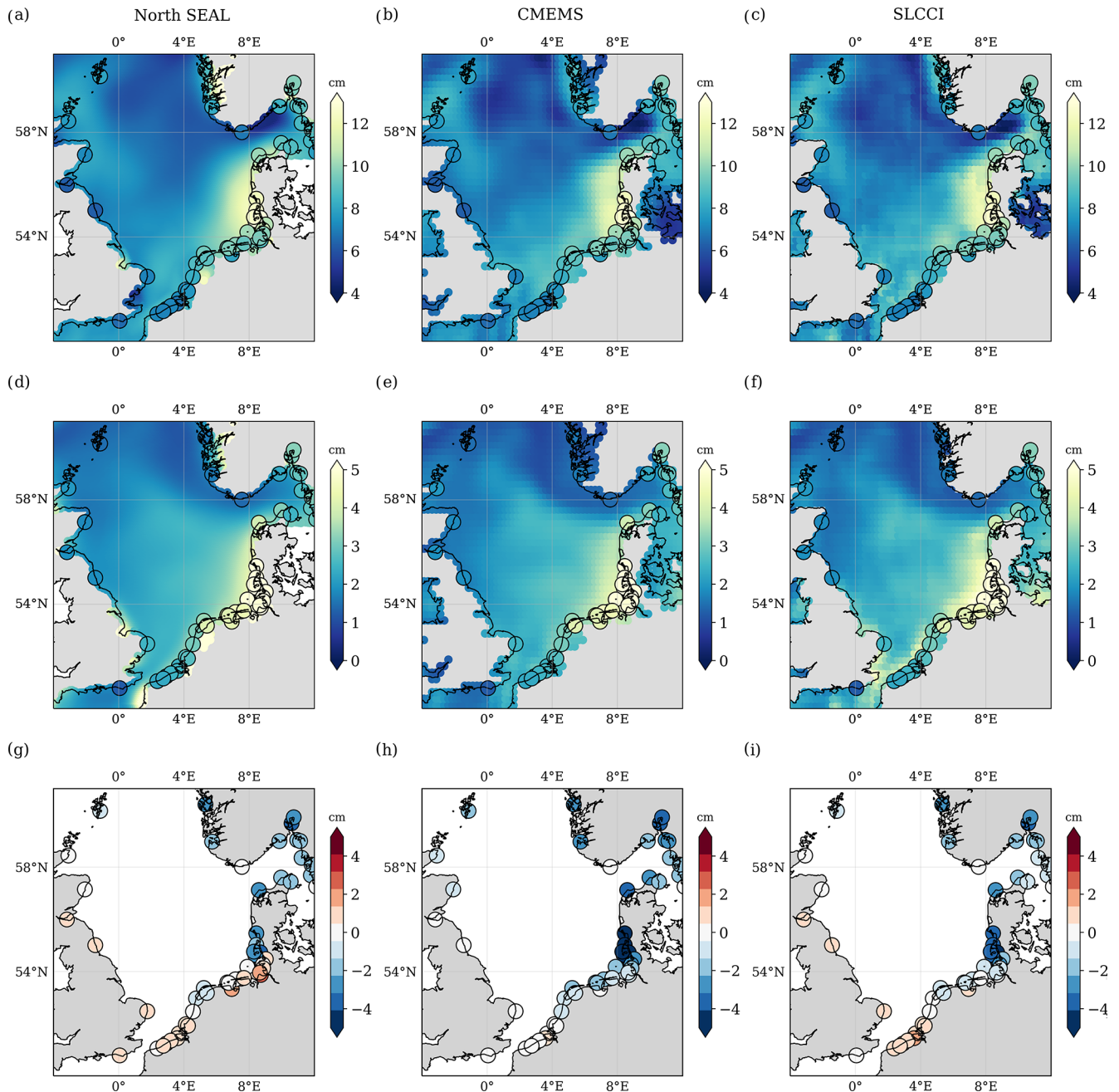


Figure 9. Amplitudes of the annual cycle (a–c) and associated uncertainties (d–f) for the three altimetry datasets and TG data. Differences of annual amplitudes at TG locations are shown in (g–i). None of these differences are statistically significant.

uct is available at https://doi.org/10.5270/esa-sea_level_cci-IND_MSL_MERGED-1993_2015-v_2.0-201612 (last access: 27 July 2020 – Legeais et al., 2018). The GIA dataset is available from JPL/NASA (<https://vesl.jpl.nasa.gov/solid-earth/gia/>, last access: 1 September 2020 – Caron et al., 2018). The VLM is distributed at <https://www.atmosph.physics.utoronto.ca/~peltier/data.php> (last access: 25 November 2020 – Peltier et al., 2018). The contemporary mass redistribution is provided at Zenodo (<https://zenodo.org/record/3862995#.X05RrIuxVPY>, last access: 1 September 2020 – Frederikse et al., 2020).

A set of Python codes for novice coders, which has been developed in the framework of the ESA Baltic SEAL project, can also be used for North SEAL. It provides tools to visualize the data and to convert it to other formats. It is available as a zipped file and can be downloaded from <http://balticseal.eu/outputs/> (last access: 27 July 2021).

8 Conclusions

This paper presents the new dataset North SEAL of monthly gridded sea level heights in the North Sea over the period 1995–2019. North SEAL contains sea level anomalies, long-term mean sea surface heights (DTU15MSS), uncertainty estimates, and quality flags on a triangular 6–8 km mesh. In addition, derived linear sea level trends and amplitudes of the annual cycle are provided per grid node. An updated mean sea surface optimized for use together with the sea level anomalies of North SEAL is subject to future work. North SEAL has been created from 24 years of multi-mission cross-calibrated altimetry data, which were carefully preprocessed and optimized for coastal applications. Along-track data were gridded using the innovative procedure developed within the ESA Baltic SEAL project.

Comparison with existing global altimetry products and with TG observations revealed an improved performance, with average correlations between SLA and TG time series of 0.85. Monthly deseasoned time series result in a median rms of the altimetry–TG difference time series of 4.9 cm, while the median rms in the case of annual mean values is 2.2 cm. These values clearly outperform other existing altimetry products on a monthly scale, but North SEAL can still be improved to better represent interannual variability. The median trend differences with respect to TGs are $0.04 \pm 1.15 \text{ mm yr}^{-1}$ (C18 VLM). Since the investigation period is relatively short, the uncertainties are still too high to see statistically significant trend differences. The mean deviation of the annual amplitude with respect to TG observations is 1.3 cm.

With North SEAL, for the first time, a regionally optimized sea level dataset for the entire North Sea is available. Even though the length of the time series is still much shorter than some of the TG records in the region, the data offer the possibility to investigate sea level changes – not only in coastal but also in offshore areas. This enables basin-wide studies of physical processes driving sea level variability, such as the impact of atmospheric wind and pressure forcing, as has already been done based on the Baltic SEAL dataset, which Passaro et al. (2021) used to study the connection between sea level anomalies in different areas of the Baltic Sea and the North Atlantic Oscillation. North SEAL will enable similar studies as that of Dangendorf et al. (2014a) based on a consistent dataset for offshore and coastal areas at a higher spatial scale. Moreover, an improved determination of sea level signatures of coastal currents can be expected. This is something that was, until now, only possible using along-track data (e.g., Passaro et al., 2015; Birol and Delebecque, 2014). In addition, the new dataset can help to validate and improve ocean or climate models. Through both the improved process understanding and the improved modeling, North SEAL can also be beneficial for sea level projections. It provides an observational basis to better estimate the time of emergence of projected sea level change above observed variability and for the planning of adaptation and coastal protection measures.

North SEAL is provided as an updated version at irregular intervals to incorporate the latest observations, reprocessed altimetry data, and the most up-to-date geophysical models.

Appendix A

Table A1. Orbit solutions used for the different altimetry missions.

Mission	Orbit solution	Institution	Reference frame	More information
TP	MGDR (EPN type)	NASA/GSFC	old ITRF	AVISO (1996)
J-1	VER13	GFZ	ITRF2014	Rudenko et al. (2018)
J-2*	std1504_14	GSFC	ITRF2014	Lemoine et al. (2015)
J-3	GDR-F	CNES	ITRF2014	CNES (2018)
ERS-2	Reaper V2	DEOS	ITRF2014	Otten and Visser (2019)
Envisat	VER13	GFZ	ITRF2014	Rudenko et al. (2018)
SARAL	GDR-F	CNES	ITRF2014	CNES (2018)
CS-2	GDR-F	CNES	ITRF2014	CNES (2018)
S3-A/B	GDR-F	CNES	ITRF2014	CNES (2018)

* Only until end of core phase; later CNES GDR-D.

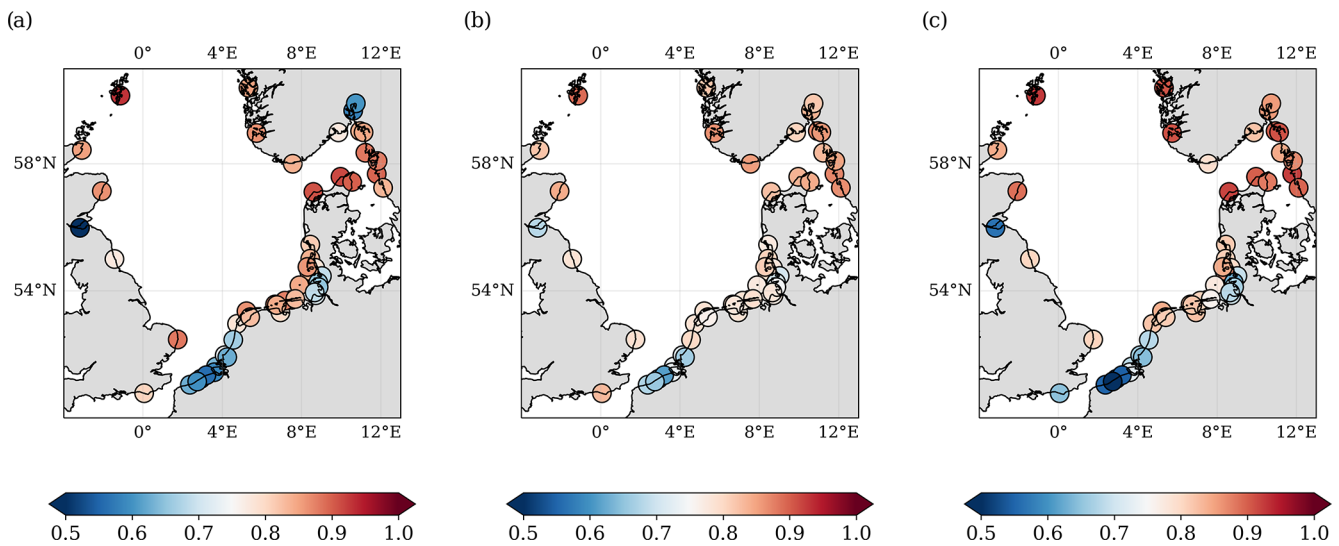


Figure A1. Correlations of altimetry sea level observations with 54 tide gauge observations computed over a period of 20 years (1995–2015) for three different altimetry datasets: (a) North SEAL, (b) CMEMS, and (c) SL_cci. The median correlations for all stations are 0.828 (North SEAL), 0.790 (CMEMS), and 0.816 (SL_cci) without taking into account quality flags of North SEAL SLA grids.

Author contributions. DD designed the study together with all co-authors. DD, JO, and FLM wrote the paper. FLM and JO were responsible for the computation of the data and prepared the NetCDF datasets. FLM prepared the SLA grids, and JO prepared TG and VLM data and performed the TG comparison. MP was responsible for the altimetry data retracking and the sea state bias correction, and he was the principal investigator of the Baltic SEAL project, in which the majority of the methods used were developed. CS is responsible for the altimetry database in DGFI-TUM and ensured the availability of the along-track observations used in this study. JB and MR were responsible for and reviewed all deliverables of the ESA Baltic SEAL project, enabling the method development and the generation of this dataset. FS initiated the study and provided the basic resources at DGFI-TUM, making the study possible. All authors contributed to the discussion and interpretation of the results. In addition, they all read, commented on, and reviewed the final paper.

Competing interests. The authors declare that they have no conflict of interest.

Disclaimer. Publisher's note: Copernicus Publications remains neutral with regard to jurisdictional claims in published maps and institutional affiliations.

Acknowledgements. Most of the methods used for the generation of the dataset have been developed in the framework of the Baltic+ Sea Level project (ESA contract: 4000126590/19/I-BG), funded by the ESA's Scientific Data Exploitation Element of the Earth Observation Envelope Programme (EOEP-5), Baltic Regional Initiative.

We highly appreciate the opportunity to use the extensive collection of noise models provided by the Hector software (Bos et al., 2013).

Review statement. This paper was edited by Giuseppe M. R. Manzella and reviewed by two anonymous referees.

References

Akaike, H.: Information Theory and an Extension of the Maximum Likelihood Principle, Springer, New York, 199–213, https://doi.org/10.1007/978-1-4612-1694-0_15, 1998.

Albrecht, F., Wahl, T., Jensen, J., and Weisse, R.: Determining sea level change in the German Bight, *Ocean Dynam.*, 61, 2037–2050, <https://doi.org/10.1007/s10236-011-0462-z>, 2011.

Andersen, O., Knudsen, P., and Stenseng, L.: The DTU13 MSS (Mean Sea Surface) and MDT (Mean Dynamic Topography) from 20 Years of Satellite Altimetry, in: IGFS 2014, edited by: Jin, S. and Barzaghi, R., Springer International Publishing, Cham, 111–121, https://doi.org/10.1007/1345_2015_182, 2016.

AVISO: Merged TOPEX/POSEIDON Products (GDR-M)s, AVISO User Handbook AVI-NT-02-101-CN, Edition 3.0, July

1996, CLS/CNES, available at: https://www.aviso.altimetry.fr/fileadmin/documents/data/tools/hdbk_tp_gdrm.pdf (last access: 27 July 2021), 1996.

- Benveniste, J., Birol, F., Calafat, F., Cazenave, A., Dieng, H., Gouzenes, Y., Legeais, J. F., Léger, F., Niño, F., Passaro, M., Schwatke, C., and Shaw, A.: Coastal sea level anomalies and associated trends from Jason satellite altimetry over 2002–2018, *Scientific Data*, 7, 357, <https://doi.org/10.1038/s41597-020-00694-w>, 2020.
- Birol, F. and Delebecque, C.: Using high sampling rate (10/20 Hz) altimeter data for the observation of coastal surface currents: A case study over the northwestern Mediterranean Sea, *J. Marine Syst.*, 129, 318–333, <https://doi.org/10.1016/j.jmarsys.2013.07.009>, 2014.
- Birol, F., Léger, F., Passaro, M., Cazenave, A., Niño, F., Calafat, F. M., Shaw, A., Legeais, J.-F., Gouzenes, Y., Schwatke, C., and Benveniste, J.: The X-TRACK/ALES multi-mission processing system: New advances in altimetry towards the coast, *Adv. Space Res.*, 67, 2398–2415, <https://doi.org/10.1016/j.asr.2021.01.049>, 2021.
- Blewitt, G., Kreemer, C., Hammond, W. C., and Gazeaux, J.: MIDAS robust trend estimator for accurate GPS station velocities without step detection, *J. Geophys. Res.-Sol. Ea.*, 121, 2054–2068, <https://doi.org/10.1002/2015JB012552>, 2016.
- Bos, M. S., Fernandes, R. M. S., Williams, S. D. P., and Bastos, L.: Fast Error Analysis of Continuous GNSS Observations with Missing Data, *J. Geod.*, 87, 351–360, <https://doi.org/10.1007/s00190-012-0605-0>, 2013.
- Bosch, W., Dettmering, D., and Schwatke, C.: Multi-Mission Cross-Calibration of Satellite Altimeters: Constructing a Long-Term Data Record for Global and Regional Sea Level Change Studies, *Remote Sens.-Basel*, 6, 2255–2281, <https://doi.org/10.3390/rs6032255>, 2014.
- Caron, L., Ivins, E. R., Larour, E., Adhikari, S., Nilsson, J., and Blewitt, G.: GIA Model Statistics for GRACE Hydrology, Cryosphere, and Ocean Science, *Geophys. Res. Lett.*, 45, 2203–2212, <https://doi.org/10.1002/2017GL076644>, 2018.
- Carrere, L., Faugère, Y., and Ablain, M.: Major improvement of altimetry sea level estimations using pressure-derived corrections based on ERA-Interim atmospheric reanalysis, *Ocean Sci.*, 12, 825–842, <https://doi.org/10.5194/os-12-825-2016>, 2016.
- Carrère, L. and Lyard, F.: Modeling the barotropic response of the global ocean to atmospheric wind and pressure forcing – comparisons with observations, *Geophys. Res. Lett.*, 30, 1275, <https://doi.org/10.1029/2002GL016473>, 2003.
- Cazenave, A., Palanisamy, H., and Ablain, M.: Contemporary sea level changes from satellite altimetry: What have we learned? What are the new challenges?, *Adv. Space Res.*, 62, 1639–1653, <https://doi.org/10.1016/j.asr.2018.07.017>, 2018.
- Cipollini, P., Benveniste, J., Birol, F., Fernandes, J., Obligis, E., Passaro, M., Strub, T., Valladeau, G., Vignudelli, S., and Wilkin, J.: Satellite Altimetry in Coastal Regions, in: *Satellite Altimetry Over Oceans and Land Surfaces*, edited by: Stammer, D. and Cazenave, A., CRC Press, Taylor and Francis Group, 2017.
- CLS: Dynamic atmospheric Corrections are produced by CLS Space Oceanography Division using the Mog2D model from Legos and distributed by Aviso+, with support from Cnes, AVISO+, available at: <http://www.aviso.altimetry.fr>, last access: 27 July 2021.

- CNES: POD Configuration: POE-F, Tech. rep., IDS, available at: ftp://ftp.ids-doris.org/pub/ids/data/POD_configuration_POEF.pdf (last access: 27 July 2021), 2018.
- Dangendorf, S., Calafat, F. M., Arns, A., Wahl, T., Haigh, I. D., and Jensen, J.: Mean sea level variability in the North Sea: Processes and implications, *J. Geophys. Res.-Oceans*, 119, 6820–6841, <https://doi.org/10.1002/2014JC009901>, 2014a.
- Dangendorf, S., Wahl, T., Nilson, E., Klein, B., and Jensen, J.: A new atmospheric proxy for sea level variability in the southeastern North Sea: observations and future ensemble projections, *Clim. Dynam.*, 43, 447–467, <https://doi.org/10.1007/s00382-013-1932-4>, 2014b.
- Desai, S., Bertiger, W., Haines, B., Harvey, N., Kuang, D., Sibthorpe, A., Webb, F., and Weiss, J.: The JPL IGS Analysis Center: Results from the reanalysis of the global GPS network, AGU Fall Meeting Abstracts, 90, 2009.
- Fernandes, M. J. and Lázaro, C.: GPD+ Wet Tropospheric Corrections for CryoSat-2 and GFO Altimetry Missions, *Remote Sens.-Basel*, 8, 851, <https://doi.org/10.3390/rs8100851>, 2016.
- Fernandes, M. J., Lázaro, C., Ablain, M., and Pires, N.: Improved wet path delays for all ESA and reference altimetric missions, *Remote Sens. Environ.*, 169, 50–74, <https://doi.org/10.1016/j.rse.2015.07.023>, 2015.
- Flather, R. A.: Existing operational oceanography, *Coast. Eng.*, 41, 13–40, [https://doi.org/10.1016/S0378-3839\(00\)00025-9](https://doi.org/10.1016/S0378-3839(00)00025-9), 2000.
- Frederikse, T. and Gerkema, T.: Multi-decadal variability in seasonal mean sea level along the North Sea coast, *Ocean Sci.*, 14, 1491–1501, <https://doi.org/10.5194/os-14-1491-2018>, 2018.
- Frederikse, T., Landerer, F. W., and Caron, L.: The imprints of contemporary mass redistribution on local sea level and vertical land motion observations, *Solid Earth*, 10, 1971–1987, <https://doi.org/10.5194/se-10-1971-2019>, 2019.
- Frederikse, T., Landerer, F., Caron, L., Adhikari, S., Parkes, D., Humphrey, V., Dangendorf, S., Hogarth, P., Zanna, L., Cheng, L., and Wu, Y.-H.: The causes of sea-level rise since 1900, *Nature*, 584, 393–397, <https://doi.org/10.1038/s41586-020-2591-3>, 2020.
- Gaspar, P., Ogor, F., Le Traon, P.-Y., and Zanife, O.-Z.: Estimating the sea state bias of the TOPEX and POSEIDON altimeters from crossover differences, *J. Geophys. Res.-Oceans*, 99, 24981–24994, <https://doi.org/10.1029/94JC01430>, 1994.
- Gouzenes, Y., Léger, F., Cazenave, A., Birol, F., Bonnefond, P., Passaro, M., Nino, F., Almar, R., Laurain, O., Schwatke, C., Legeais, J.-F., and Benveniste, J.: Coastal sea level rise at Senetosa (Corsica) during the Jason altimetry missions, *Ocean Sci.*, 16, 1165–1182, <https://doi.org/10.5194/os-16-1165-2020>, 2020.
- Gregory, J. M., Griffies, S. M., Hughes, C. W., Lowe, J. A., Church, J. A., Fukimori, I., Gomez, N., Kopp, R. E., Landerer, F., Cozannet, G. L., Ponte, R. M., Stammer, D., Tamisiea, M. E., and van de Wal, R. S. W.: Concepts and Terminology for Sea Level: Mean, Variability and Change, Both Local and Global, *Surv. Geophys.*, 40, 1251–1289, <https://doi.org/10.1007/s10712-019-09525-z>, 2019.
- Hermans, T. H. J., Le Bars, D., Katsman, C. A., Camargo, C. M. L., Gerkema, T., Calafat, F. M., Tinker, J., and Slangen, A. B. A.: Drivers of Interannual Sea Level Variability on the Northwestern European Shelf, *J. Geophys. Res.-Oceans*, 125, e2020JC016325, <https://doi.org/10.1029/2020JC016325>, 2020.
- Holgate, S. J., Matthews, A., Woodworth, P. L., Rickards, L. J., Tamisiea, M. E., Bradshaw, E., Foden, P. R., Gordon, K. M., Jevrejeva, S., and Pugh, J.: New Data Systems and Products at the Permanent Service for Mean Sea Level, *J. Coastal Res.*, 29, 493–504, <https://doi.org/10.2112/JCOASTRES-D-12-00175.1>, 2013.
- Høyer, J. L. and Andersen, O. B.: Improved description of sea level in the North Sea, *J. Geophys. Res.-Oceans*, 108, 3163, <https://doi.org/10.1029/2002JC001601>, 2003.
- Kleinherenbrink, M., Riva, R., and Scharroo, R.: A revised acceleration rate from the altimetry-derived global mean sea level record, *Sci. Rep.-UK*, 9, 10908, <https://doi.org/10.1038/s41598-019-47340-z>, 2019.
- Koch, K.-R.: Parameter Estimation and Hypothesis Testing in Linear Models, Springer, Berlin, Heidelberg, <https://doi.org/10.1007/978-3-662-03976-2>, 1999.
- Landskron, D. and Böhm, J.: VMF3/GPT3: refined discrete and empirical troposphere mapping functions, *J. Geodesy*, 92, 349–360, <https://doi.org/10.1007/s00190-017-1066-2>, 2018.
- Legeais, J.-F., Ablain, M., Zawadzki, L., Zuo, H., Johannessen, J. A., Scharffenberg, M. G., Fenoglio-Marc, L., Fernandes, M. J., Andersen, O. B., Rudenko, S., Cipollini, P., Quartly, G. D., Passaro, M., Cazenave, A., and Benveniste, J.: An improved and homogeneous altimeter sea level record from the ESA Climate Change Initiative, *Earth Syst. Sci. Data*, 10, 281–301, <https://doi.org/10.5194/essd-10-281-2018>, 2018.
- Lemoine, F., Zelensky, N., Chinn, D., Beckley, B., Rowlands, D., and Pavlis, D.: A new time series of orbits (std1504) for TOPEX/Poseidon, Jason-1, Jason-2 (OSTM), presented at: OSTST 2015, Reston Virginia, October 2015, available at: https://ostst.avisio.altimetry.fr/fileadmin/user_upload/tx_ausyclsseminar/files/OSTST2015/POD-02-Lemoine.pdf_01.pdf (last access: 27 July 2021), 2015.
- Lyard, F. H., Allain, D. J., Cancet, M., Carrère, L., and Picot, N.: FES2014 global ocean tide atlas: design and performance, *Ocean Sci.*, 17, 615–649, <https://doi.org/10.5194/os-17-615-2021>, 2021.
- Mitchum, G. T.: An Improved Calibration of Satellite Altimetric Heights Using Tide Gauge Sea Levels with Adjustment for Land Motion, *Mar. Geod.*, 23, 145–166, <https://doi.org/10.1080/01490410050128591>, 2000.
- Müller, F. L., Oelmann, J., Dettmering, D., Passaro, M., Schwatke, C., Restano, M., Benveniste, J., and Seitz, F.: North-SEAL: Gridded Sea Level Anomalies and Trends for the North Sea from Multi-Mission Satellite Altimetry, *SEANOE*, <https://doi.org/10.17882/79673>, 2021.
- Oelmann, J., Passaro, M., Dettmering, D., Schwatke, C., Sánchez, L., and Seitz, F.: The zone of influence: matching sea level variability from coastal altimetry and tide gauges for vertical land motion estimation, *Ocean Sci.*, 17, 35–57, <https://doi.org/10.5194/os-17-35-2021>, 2021.
- Otten, M. and Visser, P.: ERS Orbit Validation Report, Document id: Dops-sys-tn-101-ops-gn, available at: <https://earth.esa.int/eogateway/documents/20142/37627/ERS-Orbit-Validation-Report.pdf> (last access: 27 July 2021), 2019.
- Passaro, M., Cipollini, P., Vignudelli, S., Quartly, G. D., and Snaith, H. M.: ALES: A multi-mission adaptive subwaveform retracker for coastal and open ocean altimetry, *Remote Sens. En-*

- viron., 145, 173–189, <https://doi.org/10.1016/j.rse.2014.02.008>, 2014.
- Passaro, M., Cipollini, P., and Benveniste, J.: Annual sea level variability of the coastal ocean: The Baltic Sea-North Sea transition zone, *J. Geophys. Res.-Oceans*, 120, 3061–3078, <https://doi.org/10.1002/2014JC010510>, 2015.
- Passaro, M., Kildegaard, S. R., Andersen, O. B., Boergens, E., Calafat, F. M., Dettmering, D., and Benveniste, J.: ALES+: Adapting a homogenous ocean retracker for satellite altimetry to sea ice leads, coastal and inland waters, *Remote Sens. Environ.*, 211, 456–471, <https://doi.org/10.1016/j.rse.2018.02.074>, 2018a.
- Passaro, M., Nadzir, Z. A., and Quartly, G. D.: Improving the precision of sea level data from satellite altimetry with high-frequency and regional sea state bias corrections, *Remote Sens. Environ.*, 218, 245–254, <https://doi.org/10.1016/j.rse.2018.09.007>, 2018b.
- Passaro, M., Müller, F., and Dettmering, D.: Baltic+SEAL: Algorithm Theoretical Baseline Document (ATBD), Version 2.1. Technical report delivered under the Baltic+ SEAL project, Tech. rep., ESA, <https://doi.org/10.5270/esa.BalticSEAL.ATBDV2.1>, 2020.
- Passaro, M., Müller, F. L., Oelsmann, J., Rautiainen, L., Dettmering, D., Hart-Davis, M. G., Abulaitijiang, A., Andersen, O. B., Hoyer, J. L., Madsen, K. S., Ringgaard, I. M., Särkkä, J., Scarrott, R., Schwatke, C., Seitz, F., Tuomi, L., Restano, M., and Benveniste, J.: Absolute Baltic Sea Level Trends in the Satellite Altimetry Era: A Revisit, *Frontiers in Marine Science*, 8, 546, <https://doi.org/10.3389/fmars.2021.647607>, 2021.
- Peltier, W. R., Argus, D. F., and Drummond, R.: Space geodesy constrains ice age terminal deglaciation: The global ICE-6G_C (VM5a) model, *J. Geophys. Res.-Sol. Ea.*, 120, 450–487, <https://doi.org/10.1002/2014JB011176>, 2015.
- Peltier, W. R., Argus, D. F., and Drummond, R.: Comment on “An Assessment of the ICE-6G_C (VM5a) Glacial Isostatic Adjustment Model” by Purcell et al., *J. Geophys. Res.-Sol. Ea.*, 123, 2019–2028, <https://doi.org/10.1002/2016JB013844>, 2018.
- Petit, G. and Luzum, B.: IERS Conventions 2010, IERS Technical Note; 36, Frankfurt am Main: Verlag des Bundesamts für Kartographie und Geodäsie, 179 pp., available at: <http://www.iers.org/TN36> (last access: 27 July 2021), 2010.
- Pujol, M.-I., Faugère, Y., Taburet, G., Dupuy, S., Pelloquin, C., Ablain, M., and Picot, N.: DUACS DT2014: the new multi-mission altimeter data set reprocessed over 20 years, *Ocean Sci.*, 12, 1067–1090, <https://doi.org/10.5194/os-12-1067-2016>, 2016.
- Quante, M., Colijn, F., Bakker, J. P., Härdtle, W., Heinrich, H., Lefebvre, C., Nöhren, I., Olesen, J. E., Pohlmann, T., Sterr, H., Sündermann, J., and Tölle, M. H.: Introduction to the Assessment – Characteristics of the Region, Springer International Publishing, Cham, 1–52, https://doi.org/10.1007/978-3-319-39745-0_1, 2016.
- Richter, K., Nilsen, J. E., and Drange, H.: Contributions to sea level variability along the Norwegian coast for 1960–2010, *J. Geophys. Res.-Oceans*, 117, C05038, <https://doi.org/10.1029/2011JC007826>, 2012.
- Royston, S., Watson, C. S., Legrésy, B., King, M. A., Church, J. A., and Bos, M. S.: Sea-Level Trend Uncertainty With Pacific Climatic Variability and Temporally-Correlated Noise, *J. Geophys. Res.-Oceans*, 123, 1978–1993, <https://doi.org/10.1002/2017JC013655>, 2018.
- Rudenko, S., Schöne, T., Esselborn, S., and Neumayer, K. H.: GFZ VER13 SLCCI precise orbits of altimetry satellites ERS-1, ERS-2, Envisat, TOPEX/Poseidon, Jason-1, and Jason-2 in the ITRF2014 reference frame, GFZ Data Services, <https://doi.org/10.5880/GFZ.1.2.2018.003>, 2018.
- Scharroo, R. and Smith, W. H. F.: A global positioning system-based climatology for the total electron content in the ionosphere, *J. Geophys. Res.-Space*, 115, A10318, <https://doi.org/10.1029/2009JA014719>, a10318, 2010.
- Schwarz, G.: Estimating the Dimension of a Model, *Ann. Stat.*, 6, 461–464, <https://doi.org/10.1214/aos/1176344136>, 1978.
- Shennan, I. and Woodworth, P. L.: A comparison of late Holocene and twentieth-century sea-level trends from the UK and North Sea region, *Geophys. J. Int.*, 109, 96–105, <https://doi.org/10.1111/j.1365-246X.1992.tb00081.x>, 1992.
- Stammer, D., Cazenave, A., Ponte, R. M., and Tamisiea, M. E.: Causes for Contemporary Regional Sea Level Changes, *Annu. Rev. Mar. Sci.*, 5, 21–46, <https://doi.org/10.1146/annurev-marine-121211-172406>, PMID: 22809188, 2013.
- Sterlini, P., Le Bars, D., de Vries, H., and Ridder, N.: Understanding the spatial variation of sea level rise in the North Sea using satellite altimetry, *J. Geophys. Res.-Oceans*, 122, 6498–6511, <https://doi.org/10.1002/2017JC012907>, 2017.
- Sterr, H.: Assessment of Vulnerability and Adaptation to Sea-Level Rise for the Coastal Zone of Germany, *J. Coastal Res.*, 24, 380–393, <https://doi.org/10.2112/07A-0011.1>, 2008.
- Taburet, G., Sanchez-Roman, A., Ballarotta, M., Pujol, M.-I., Legéais, J.-F., Fournier, F., Faugere, Y., and Dibarboure, G.: DUACS DT2018: 25 years of reprocessed sea level altimetry products, *Ocean Sci.*, 15, 1207–1224, <https://doi.org/10.5194/os-15-1207-2019>, 2019.
- Tinker, J., Palmer, M. D., Copsey, D., Howard, T., Lowe, J. A., and Hermans, T. H. J.: Dynamical downscaling of unforced interannual sea-level variability in the North-West European shelf seas, *Clim. Dynam.*, 55, 2207–2236, <https://doi.org/10.1007/s00382-020-05378-0>, 2020.
- Wahl, T.: Sea-level rise and storm surges, relationship status: complicated!, *Environ. Res. Lett.*, 12, 111001, <https://doi.org/10.1088/1748-9326/aa8eba>, 2017.
- Wahl, T., Haigh, I., Woodworth, P., Albrecht, F., Dillingh, D., Jensen, J., Nicholls, R., Weisse, R., and Wöppelmann, G.: Observed mean sea level changes around the North Sea coastline from 1800 to present, *Earth-Sci. Rev.*, 124, 51–67, <https://doi.org/10.1016/j.earscirev.2013.05.003>, 2013.
- Wakelin, S. L., Woodworth, P. L., Flather, R. A., and Williams, J. A.: Sea-level dependence on the NAO over the NW European Continental Shelf, *Geophys. Res. Lett.*, 30, 1403, <https://doi.org/10.1029/2003GL017041>, 2003.
- Winther, N. G. and Johannessen, J. A.: North Sea circulation: Atlantic inflow and its destination, *J. Geophys. Res.-Oceans*, 111, C12018, <https://doi.org/10.1029/2005JC003310>, 2006.
- Woodworth, P., Teferle, F., Bingley, R., Shennan, I., and Williams, S.: Trends in UK mean sea level revisited, *Geophys. J. Int.*, 176, 19–30, <https://doi.org/10.1111/j.1365-246X.2008.03942.x>, 2009.
- WSV: Tide gauge data of the Wasserstrassen und Schifffahrtsverwaltung des Bundes, made available by the Bundesanstalt für Gewässerkunde (BfG), 2013.

Zhang, Z., Stanev, E. V., and Grayek, S.: Reconstruction of the Basin-Wide Sea-Level Variability in the North Sea Using Coastal Data and Generative Adversarial Networks, *J. Geophys. Res.-Oceans*, 125, e2020JC016402, <https://doi.org/10.1029/2020JC016402>, 2020.

© 2021. This work is published under <https://creativecommons.org/licenses/by/4.0/>(the “License”). Notwithstanding the ProQuest Terms and Conditions, you may use this content in accordance with the terms of the License.